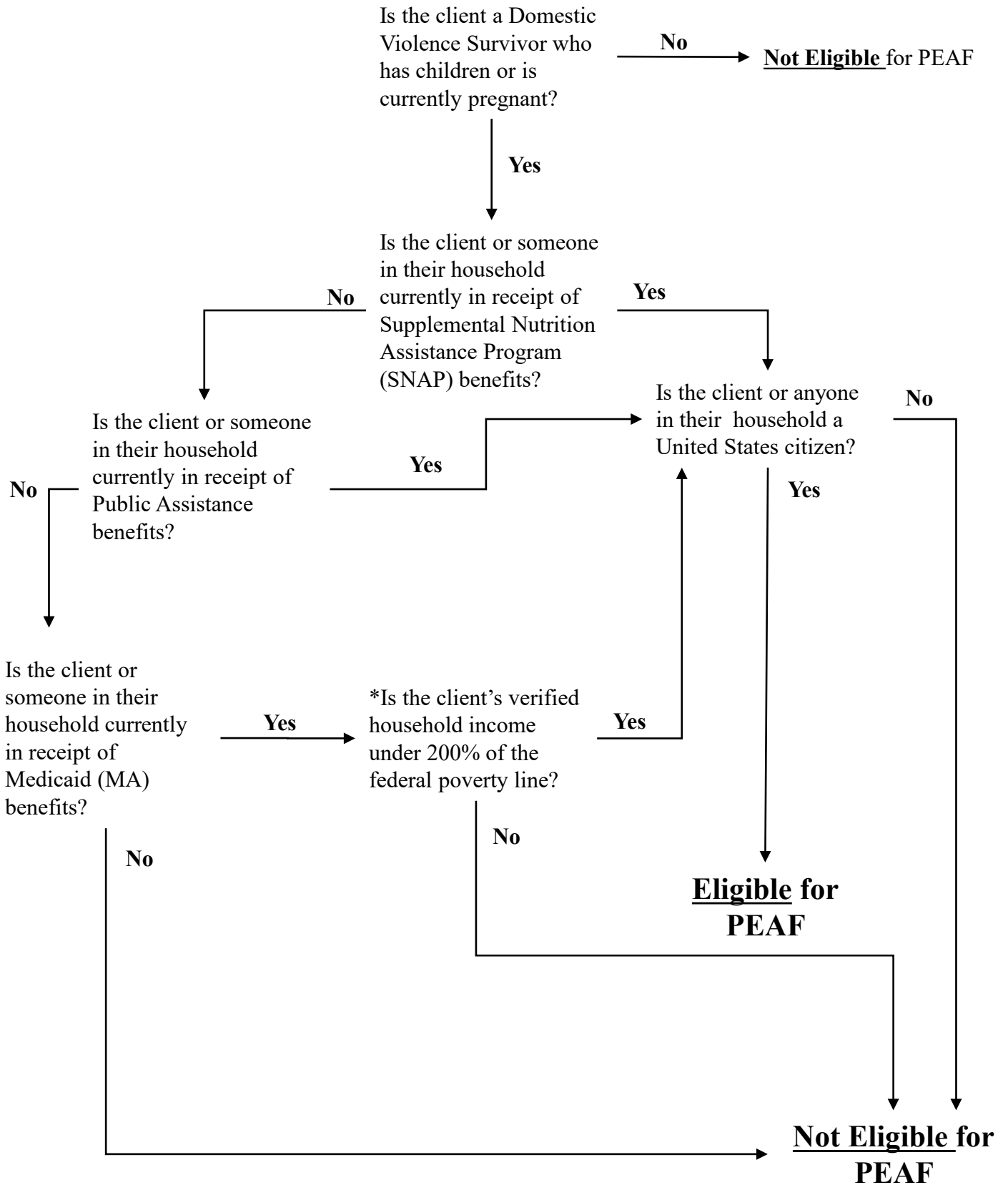


PEAF Eligibility Flow Chart

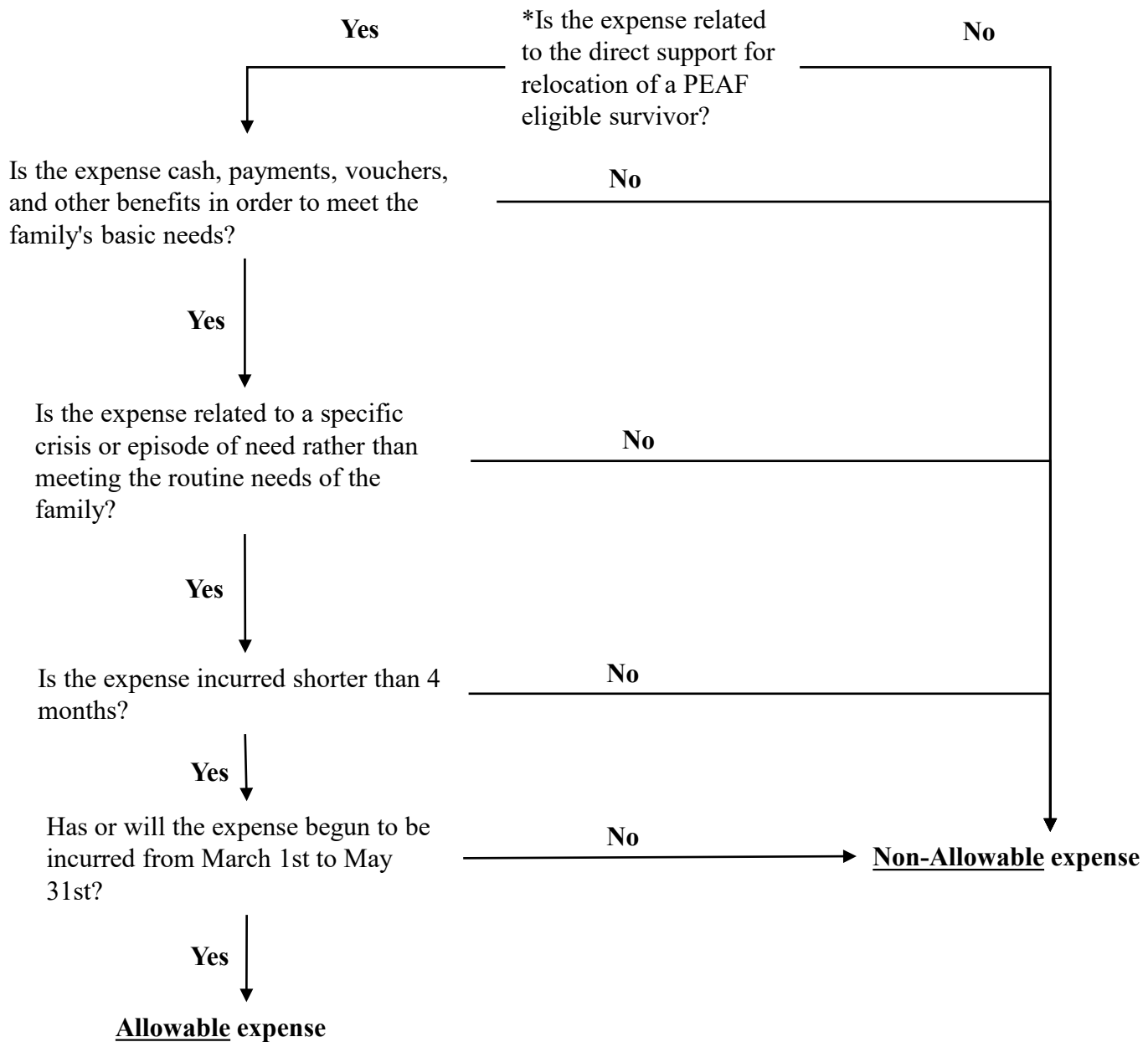
Please use this flow chart to help determine client eligibility for PEAFF funding. Programs must still complete the OPDV provided eligibility application form.



*Please refer to the Federal Poverty Guidelines Chart Effective June 1, 2021, through May 31, 2022

PEAF Allowable Expenses Flow Chart

Once you determine a client's PEAf eligibility – use this flow chart to determine if the assistance they need is considered an allowable expense by asking the following questions.



**Allowable Expenses

- Gift cards
- Clothing and food
- Moving company and storage costs
- Security deposits and rental assistance
- Utility payments
- Furniture, & household items

Non-Allowable Expenses

- Personal services and/ or administrative costs
- Needs/obligations expected to extend beyond four months
- Tax credits
- Child-care
- Transportation
- Short-term education and training

* Relocation may look different for each recipient, and we defer to the program's expertise on what expenses may be related to this. Relocation may include scenarios where a partner has relocated, and the survivor has remained.

**This is not an exhaustive list of potential eligible expenses. All expenses must meet the guidelines outlines above (non-recurrent, short term (NRST) benefits related to relocation).